

JS500 Ink Curve Software Instruction Manual

JS500-UM-S51 1st

You can use the following two types of ink cartridges at JS500/JS501.

- IJ-81000 series: Solvent ink cartridge
- IJ-81050 series: Eco solvent ink cartridge

JS500 Ink Curve Software can be used to set up the individual ink profile in order to control a printhead voltage properly to suit the ink cartridge that you use.

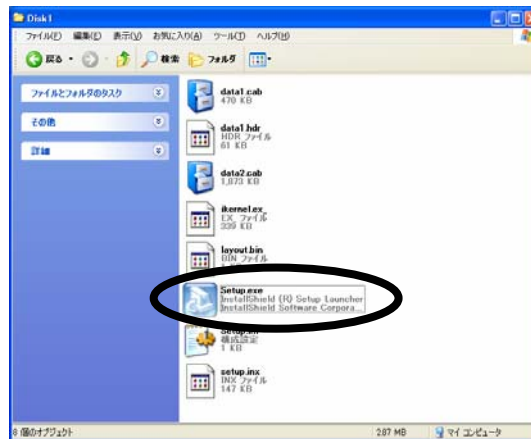
Be sure to set up the individual ink profile to meet the ink cartridge that you use.

Be sure to install the JS500 Ink Curve Software after installing “GPU” when you set up the ink profile for the first time. IJ-81000 of ink profile is set up as default value therefore you need to change the ink profile setting if you use IJ-81050.

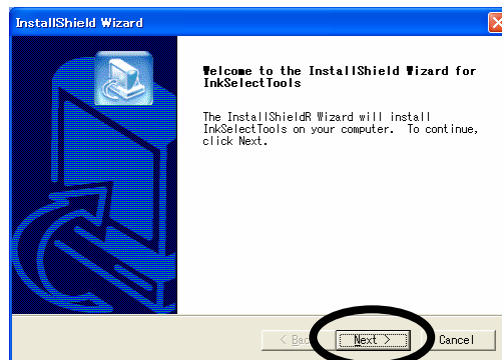
Be sure to set up this software under the condition of plugging a PC into your JS500/501 with USB cable.

How to install the Ink Curve Software

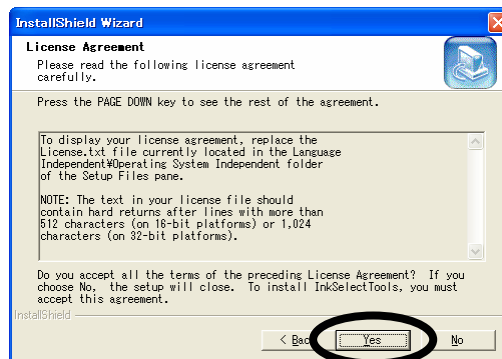
- (1) Insert the software CD-ROM in your computer's CD drive.
- (2) Double-click the icon of [Setup.exe] in the "Ink curve setting software Setup V1.0" folder to run the Setup.



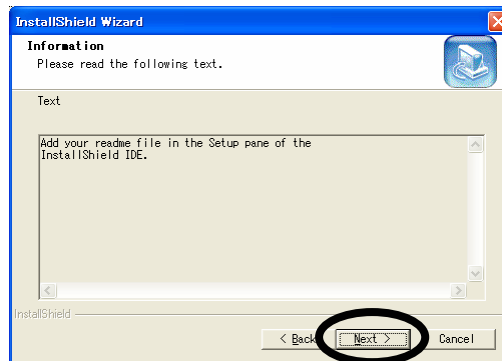
- (3) The following window is displayed then click [Next] button.



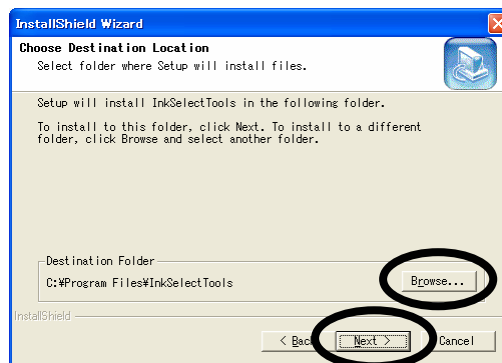
- (4) Read "License Agreement" on the display carefully then click [Next] button.



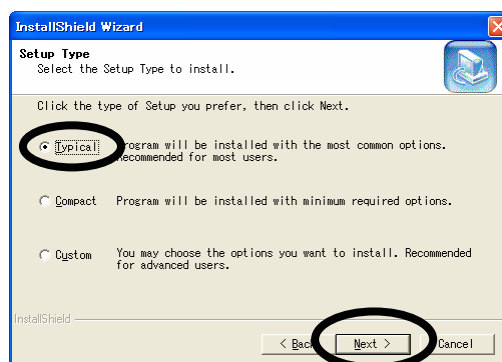
(5) Click [Next] button.



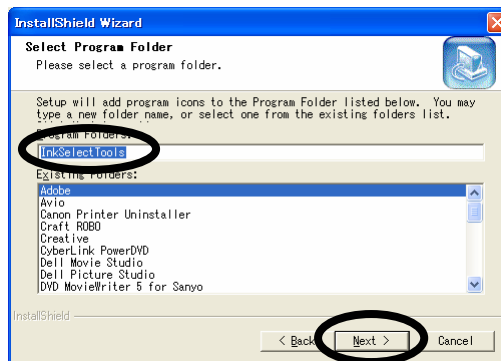
(6) Browse and select the location for installation. Click [Next] button after selecting the desired location.



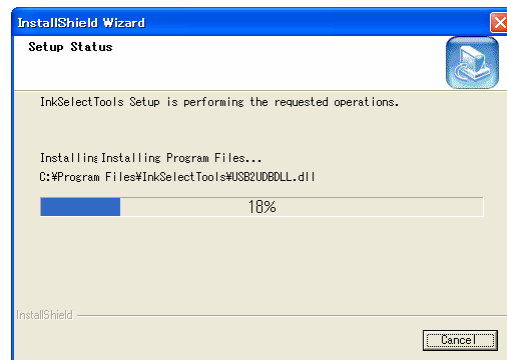
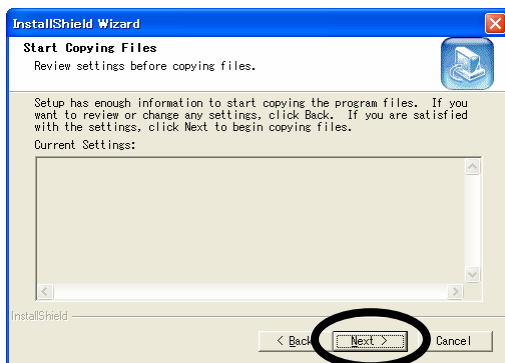
(7) Select "Typical" then click [Next] button.



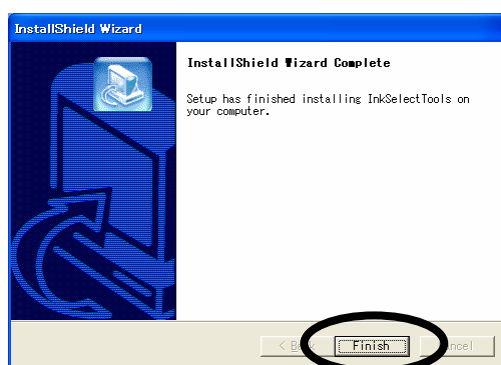
(8) Confirm the folder name that you selected, then click [Next] button.



(9) The installation is begun after you click [Next].



(10) The installation is done, and then the following window is displayed. Click [Finish] button.

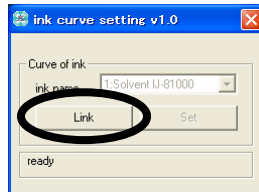


How to set up the Ink profile

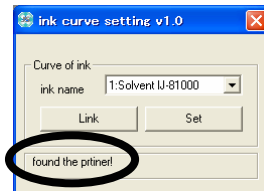
(1) Confirm that the USB cable is connected to the printer.

(2) Start up from “Start - All Programs - InkSelectTool - InkSelectTool”.

(3) Click [Link] button.

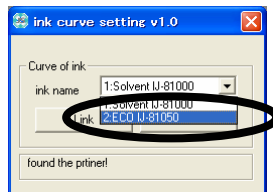


(4) Current Ink type is displayed in the [ink name]. When your printer is connected properly, “found the printer” is displayed as blow.

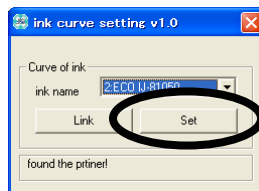


(5) Select an ink type that you use from the [ink name] pull-down menu.

- * 1:Solvent IJ-81000 : Ink profile setting for the IJ-81000series ink cartridges
- * 2:ECO IJ-81050 : Ink profile setting for the IJ-81050series ink cartridges



(6) Click [Set] button, and set up Ink profile to the printer.



(7) When the “Port reset OK!” is displayed, click  to finish the Ink Curve Software settings.

